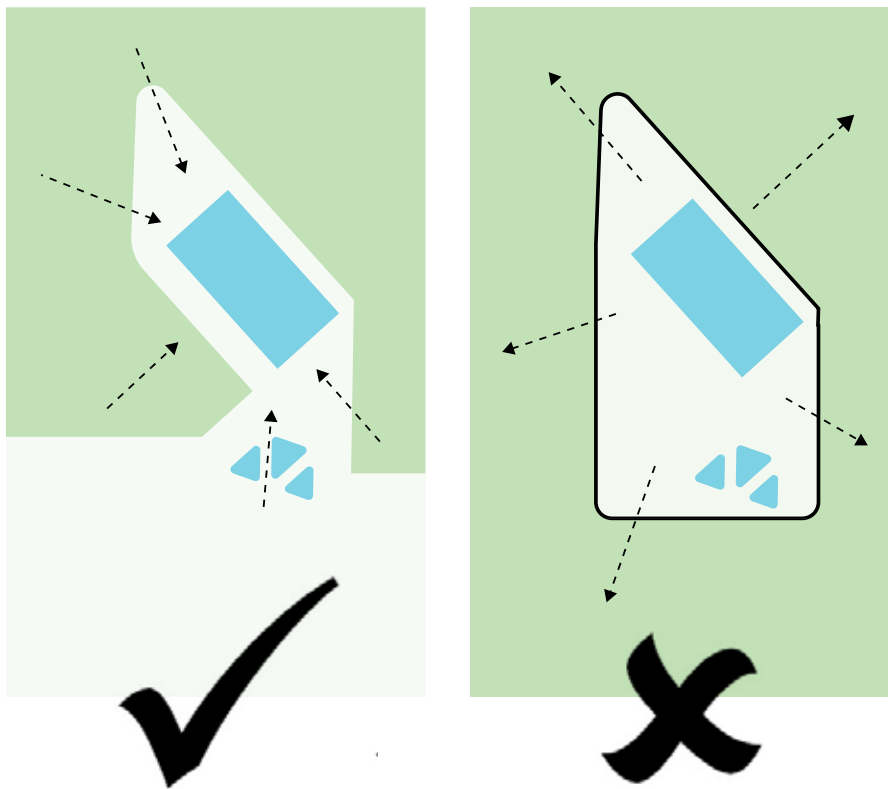


Aquatic Centre Design Principles

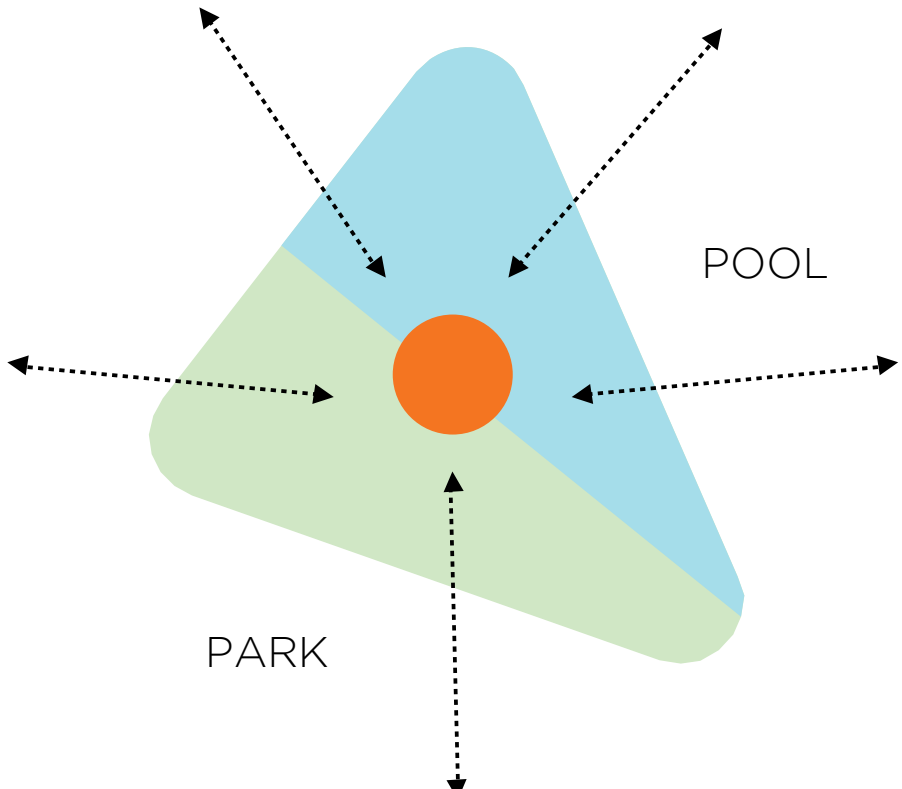


1. CONCEAL THE BUILT FORM AND FENCING WITHIN LANDFORM IN KEEPING WITH THE PICTURESQUE CHARACTER OF THE MAYS HILL PRECINCT.

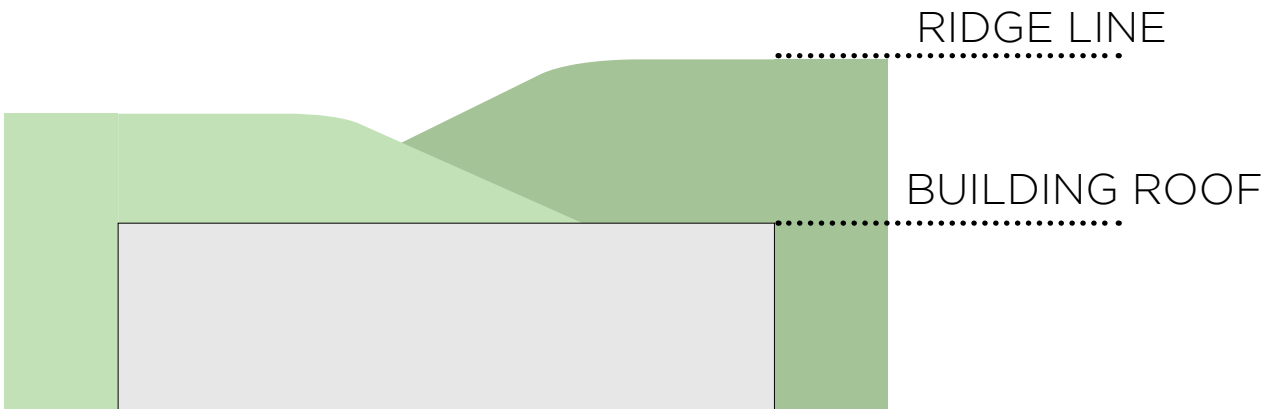


CONTAINS SPACE
BUILDING IN SPACE

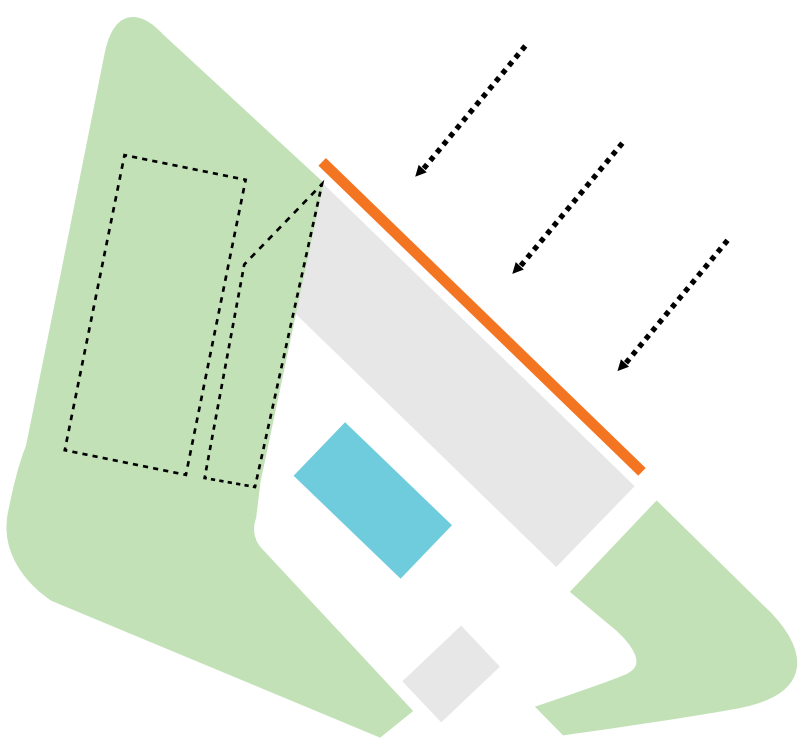
2. USE LANDFORM TO CONTAIN SPACE RATHER THAN THE AQUATIC CENTRE BEING A PROMINENT LARGE BUILDING IN THE PARK.



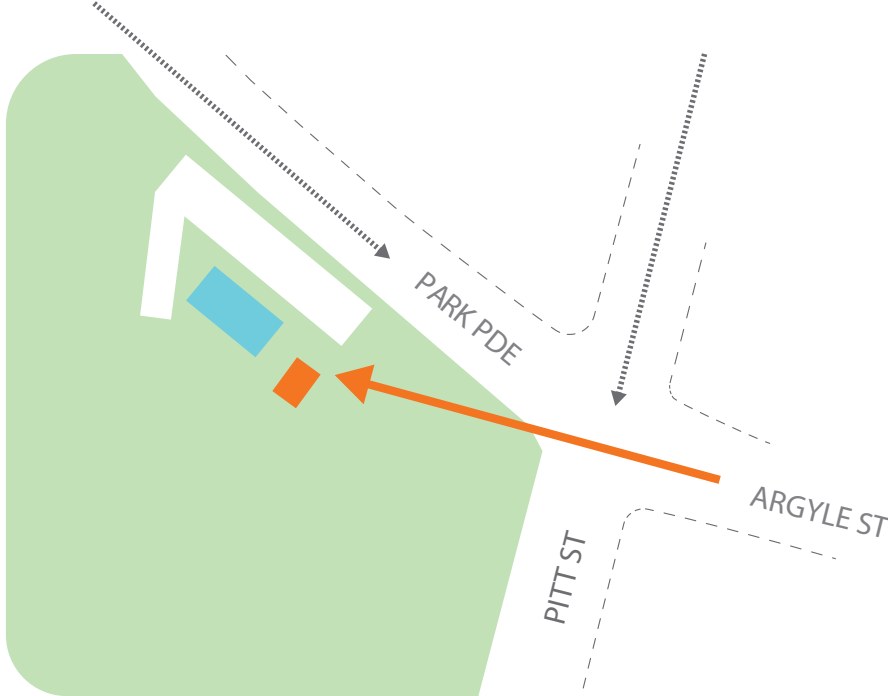
3. DESIGN THE ENTRIES AND AMENITIES (E.G. CAFE) SO THAT THEY INTERFACE WITH THE PARK.



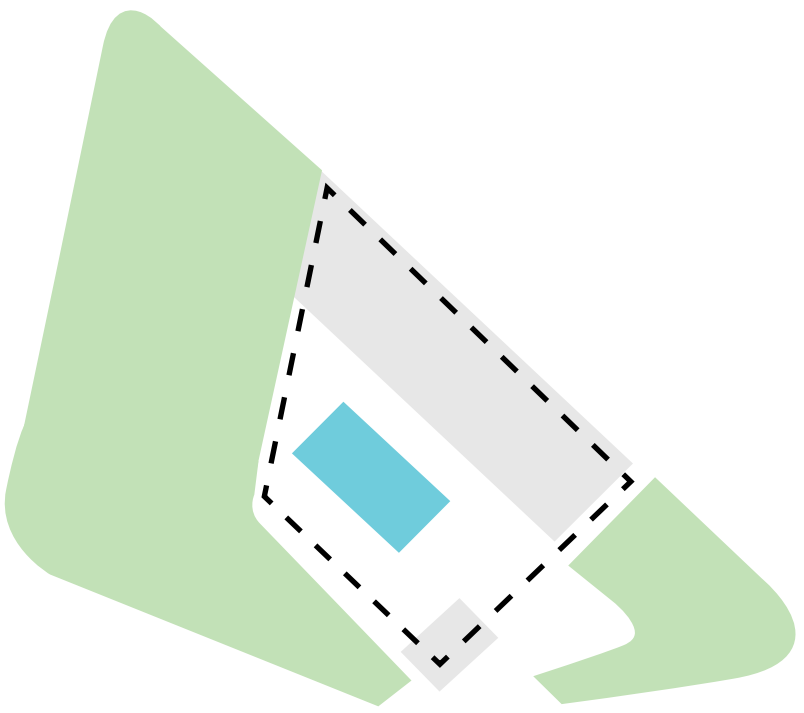
4. LOCATE THE AQUATIC CENTRE ROOF LEVEL/S BELOW THE GOVERNOR'S AVENUE RIDGELINE LEVEL SO THAT VIEWS FROM THE RIDGE LINE ARE OF TREES AND THE CITY SKYLINE, NOT A LARGE ROOF.



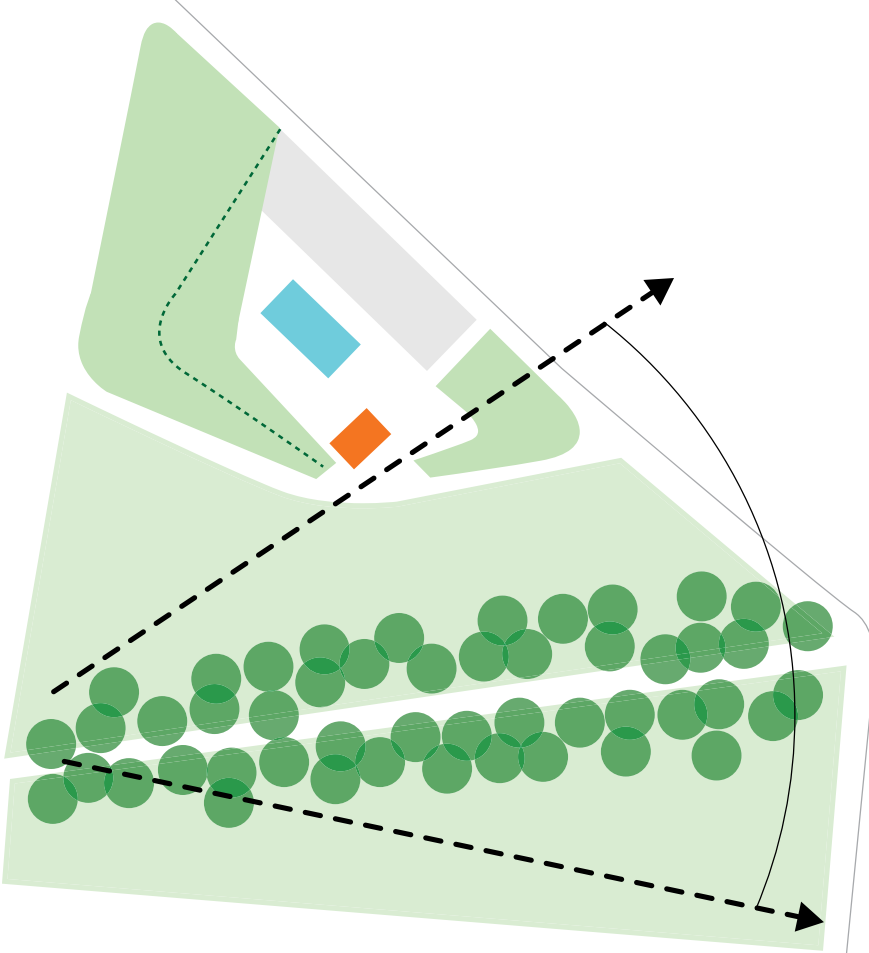
5. PRESENT AN ACTIVE INTERFACE TO THE AQUATIC CENTRE FROM PARK PARADE.



6. RELATE THE AQUATIC CENTRE ENTRY TO THE PARK ENTRY AND MAKE IT ACCESSIBLE FROM JUBILEE AVENUE.



7. LOCATE ALL CAR PARKING UNDERGROUND AND MINIMISE ABOVE GROUND BUS PARKING AND DROP OFF ZONES.



8. PROTECT THE KEY VIEWS FROM THE RIDGELINE OF MAYS HILL BY SETTING THE POOL BUILDING BACK FROM THE CORNER OF JUBILEE AVENUE.